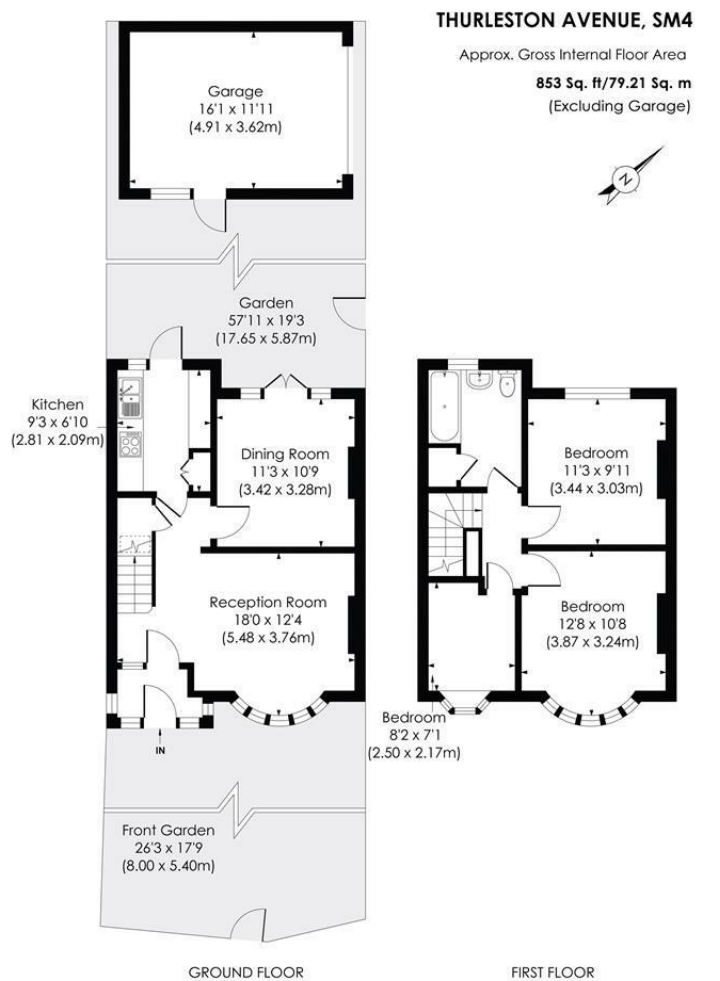


**Thurleston Avenue
Morden, SM4 4BW**

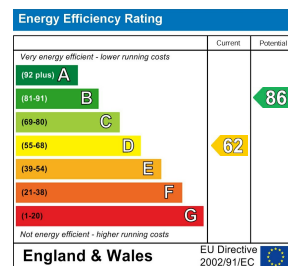
£635,000 Freehold



Impressive and attractive 'Selley built', three bedroom 1930's end of terrace family home with a south west facing garden and double garage. Highly sought after location and offering scope to extend (S.T.P). Morden and Raynes Park centers are within reach with Northern Line tube station and Raynes Park BR station.



- End of Terrace Family Home
- Three Bedrooms
- Newly Fitted Combi Boiler & Fuse Box
- Double Garage at rear
- South-West Facing Garden
- Potential to Extend Further (STPP)
- Located in the desirable Hillcross area of Morden
- Freehold
- EPC Rating - D
- Merton Council Tax Band - D



For Free Mortgage Quote and Best Mortgage Rates, call Ellisons Mortgage Advisor on 0208 543 1166



Although these particulars are believed to be correct, their accuracy is not guaranteed and they do not form part of any contract.

Celebrating 30 years of successful Sales and Lettings in Merton

